



delta institute 

ANNUAL REPORT

2022 - 2023





Above: The Duck Creek Tributary outside of Hobart, IN. Delta has partnered with the Hobart Sanitary District on the restoration of this waterway (pg 8), photo by Delta Institute
FRONT COVER / Top left: Herrick Lake in Wheaton, photo courtesy of the Forest Preserve District of DuPage County; *Top right:* Opening day of the Cheney Run Wetland Park in Michigan City, IN, photo by Delta Institute; *Middle left:* Cheney Run in Michigan City, IN after Delta's successful restoration project, photo by Delta Institute; *Bottom left:* Beebalm / Monarda bush, photo by Canva via McKinneMike; *Bottom right:* Chicago skyline looking out on Lake Michigan, photo by Canva via welcomia; *BACK COVER / Top:* Sunset on an Indiana farm, photo by Canva via IsaacTraut; *Bottom left:* Aerial view of Lake Calumet, photo courtesy of our partners at the Illinois International Port District; *Bottom right:* View of the Chicago River and the Jewelers Building, the site of Delta Institute's headquarters, by Susanne Preisinger via Unsplash

TABLE OF CONTENTS

Letter from the CEO

Our Work
(July 1, 2021 - June 30, 2023)

FY22-23 Audited Financials
(July 1, 2021 - June 30, 2023)

Ways to Invest in Our Shared Impact

FY22-23 Donor Roster
(July 1, 2021 - June 30, 2023)

Who We Are

LETTER FROM THE CEO

Yet another year has passed, and yet another year surpassed our expectations.

As you all know, our work at Delta Institute addresses the complex environmental and economic issues that face our home region, while collaborating directly with so many amazing community partners in urban and rural areas throughout the Midwest. This collaboration requires much conversation, and a key word routinely is brought up to us: resilience.

Resilience is typically used in relation to our mission or specific projects, but as we reflect in this Annual Report, let's highlight and discuss how it pertains to our organization as a whole. Thanks to our wonderful network of supporters, partners, volunteers and staff, Delta moved forward in 2022-2023 with numerous new projects, a clearer strategy and identity, and a more detailed map of the road ahead.

Well before COVID, Delta had incorporated Diversity, Equity and Inclusion (DEI) as an organizational commitment. And in 2019, we began ramping up that commitment, having recognized that we have an obligation to consider biases and equity in every facet of our work to then authentically combat the legacies of environmental injustice, and to ensure that we do not contribute to these legacy injustices that the 501c3 sector has perpetuated either directly or indirectly. In the spirit of collaboration and transparency, we published our DEI Executive Summary online and have continued to provide updates on the additional strides and resources we make in this continuous process of improvement. I encourage you to read more about the action we're taking to center DEI by visiting <https://delta-institute.org/dei>.

Our DEI efforts directly led to our current 2022-2025 Strategic Plan, allowing us to reflect, pivot, and focus in on areas that make authentic and respectful sense for Delta Institute to operate within—our “Place in the Universe,” so to speak. The first two years of our current Strategic Plan's accomplishments are described within this Report—with so much more that is on our radar for the year(s) to come.

As we all know, big plans and big ideas don't function without all the checks and balances and internal controls that allow for our efforts to flourish. I am proud to share that Candid (formerly GuideStar) has recognized Delta with a Platinum Seal of Transparency, the highest level of recognition, for the fourth year in a row. In addition, Charity Navigator designated Delta with a Four-Star rating, their highest accolade during our first-ever rating by this national nonprofit watchdog agency. This means that of the federally recognized 1.7M nonprofits in the United States, Delta ranks among the top 1% of nonprofits regarding transparency.

We welcome everyone to learn more by visiting our Candid profile at guidestar.org/profile/36-4210191 or our Charity Navigator profile at charitynavigator.org/ein/364210191.

We have so much more to share beyond what is conveyed in any report, and I invite you to email me at wschleizer@delta-institute.org or call at 312-554-0900 if you have any questions about where Delta is today, and where we're going tomorrow.

With gratitude, and keen hope of a more resilient, equitable and innovative Midwest for us all,



Bill Schleizer
CEO, Delta Institute

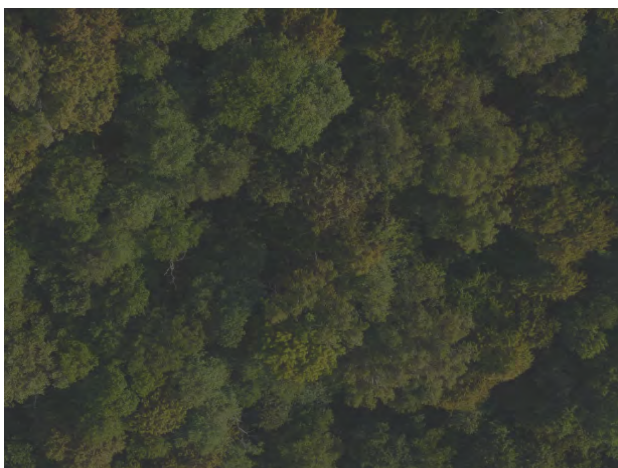
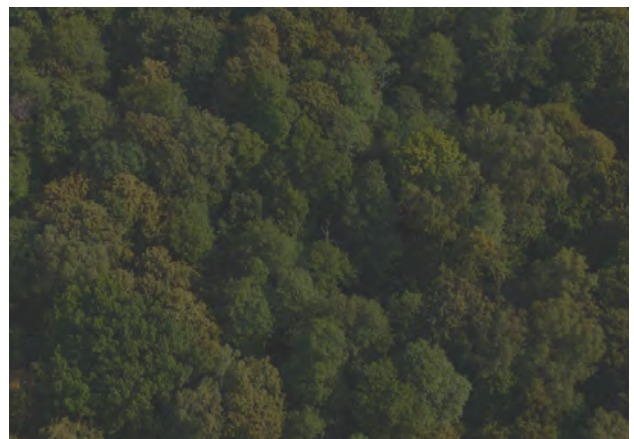


Photo by Mike Nakamura

OUR WORK

Over the past two years, our organization's namesake has become more relevant than ever. As you likely recall from a science class long ago, a delta is a natural point of change at which a river feeds into a larger body of water. Like that transformative landform, Delta Institute is a place where numerous distinct streams unify as one harmonious ecosystem. This similarity has been particularly apparent since we adopted a new Strategic Plan which defines our project portfolio in terms of three programmatic focus areas: nature-based climate solutions, resilient agriculture, and sustainability and support services.

The new Strategic Plan that outlines Delta's impact goals through 2025 stems from a longstanding organization-wide effort to evolve in order to best serve our community partners. In 2019, Delta convened a Diversity, Equity, and Inclusion (DEI) Committee composed of staff, associate board, and governing board members which created a comprehensive overview of our approach to DEI with clearly defined actionable recommendations. Those recommendations directed the creation of our current Strategic Plan, our organizational belief statement, our policies on inclusive communications and community partner compensation, as well as a wealth of resources for staff and public use.

While we're committed to continuous evolution, our purpose remains consistent: Delta Institute exists because environmental and economic issues hit communities—both urban and rural—through disinvestment, inequity, and policy decisions. We have and always will collaborate to solve legacy environmental and economic issues at the community level, but what has been transforming is how we treat the self-defined goals our partners share with us as the central foci of our projects.

By outlining three focused programmatic areas with tailored approaches to partner engagement, we have become more effective in providing our expertise and support where it is most needed and productive. Delta Institute's efforts to improve water quality, protect ecosystems, strengthen working lands, and implement sustainable community planning are aimed at achieving a vision of a thriving and climate-resilient Midwest. With equity, inclusivity, and community voices at the fundamental core of our work, we are ensuring that we're striving towards a **shared** vision of our region's future.

OPPOSITE PAGE /

Left: Juneteenth BioBlitz with Blacks in Green on June 17th, 2023, outside of the Emmett & Mamie Till-Mobley House Museum, located in the West Woodlawn Sustainable Square Mile, a project of Blacks in Green / photo courtesy of Blacks in Green

Right: Visiting the South Merrill Community Garden, a site where Delta is tracking biodiversity as part of our Generating Critical Data in Green Infrastructure project / Delta Institute

OUR PROGRAMMATIC AREAS



NATURE -BASED
CLIMATE SOLUTIONS



RESILIENT
AGRICULTURE



SUSTAINABILITY
& SUPPORT SERVICES



Our Strategic Plan Goals



5 Million
Midwesterners
impacted



100
Sustainability
tools & strategies



1 Million
Acres of more
sustainable farmland



1 Million
Metric tons of CO2-
equivalent sequestered



2022



1,000
Farmers
supported



\$100 Million
Invested in municipal
Green Infrastructure



500
Partner
communities



100 Million
Stormwater Gallons
Captured

NATURE-BASED CLIMATE SOLUTIONS

Project Highlight

RESTORING THE DUCK CREEK TRIBUTARY IN HOBART, INDIANA

In 2020, Delta Institute began strategizing the restoration of a key waterway in Hobart, Indiana, that flows throughout the entire watershed and ultimately into Lake Michigan. Currently the waterway, the Duck Creek Tributary, overflows with pollution, sediment, and toxins—impacting the water quality downstream for many communities, including multiple that are designated Environmental Justice communities. We are assisting the City of Hobart and the Hobart Sanitary District to implement streambank stabilization and restoration, and to install a riparian buffer that improves permeability and infiltration along the Tributary corridor within two distinct phases of work.

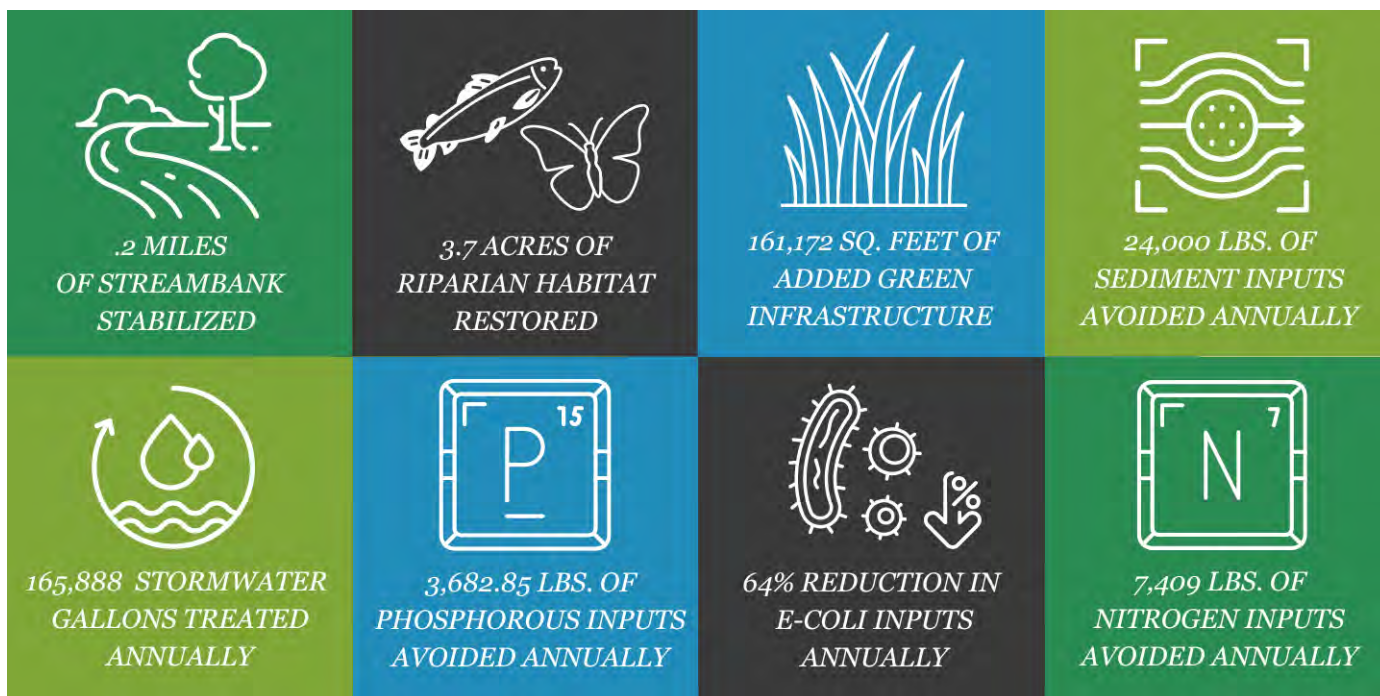


Above: Stormwater Pollution Prevention Plan Inspection; Below: Delta staff at the first phase of work in July 2023 / Delta Institute

Phase 1 Efforts (2020-2023): The project area for our first phase of restoration totaled 3.7 acres of riparian corridor with 1,100 linear feet of perennial stream, and Delta is pleased to share that the first phase of restoration efforts completed in Summer 2023 has been successful:

- Flood Reduction and Stormwater Management: 127,996 gallons of stormwater storage added, captured and infiltrated per year; 161,172 square feet of green infrastructure added.
- Erosion control: 0.2083 miles streambank stabilized; 24,000 lbs. of sediment inputs avoided annually.
- Water Quality Improvement: 3,682.85 lbs. of phosphorus inputs avoided annually; 7,409 lbs. of nitrogen inputs avoided annually; 64% reduction of E-coli inputs avoided annually
- Habitat Restoration: 0.2083 miles of instream and riparian habitat restored.





Phase 2 Efforts (2022-2025): What we will achieve by the completion of phase 2 in 2025:

- Reduce runoff contamination (via removing 4,612 lbs of Phosphorus and 16,564 lbs of nitrogen, annually) and improve water quality in the Tributary;
- Remove invasive species and restore natural habitat within the Tributary;
- Reduce erosion and sedimentation along the Tributary and provide a model for achieving sediment reductions for similar types of projects in the watershed;
- Improve in-stream and riparian habitat quality; and,
- Support climate resiliency in the City of Hobart by improving its infrastructure to manage overbank flooding and promote infiltration by improving the Tributary's capacity via 165,888 untreated stormwater gallons infiltrated annually.

Before, during, and after Phase 1 of the Duck Creek Tributary restoration



RESILIENT AGRICULTURE

Project Highlight

INSTITUTIONALIZING SOIL HEALTH LAND VALUATION ON MICHIGAN FARMS

Delta Institute spent several years engaging landowners, land managers, and farmers to implement conservation practices on working lands in Michigan to improve environmental outcomes. Specifically, we seek to improve water quality in the Great Lakes Basin through the reduction of nutrient loading and runoff on farms throughout Michigan by creating economic incentives for the adoption of soil health management systems by integrating soil health indicators when calculating farmland property value.

Our learnings built upon previous conservation efforts in Southeast Michigan that assessed current conditions and provided a roadmap of recommendations, while utilizing materials and findings from similar projects Delta has undertaken in other Midwestern geographies.

MAXIMIZE CONTINUOUS LIVING ROOTS

- Crop rotation
- Relay crops
- Forage and biomass
- Planting
- Perennial Crops
- Cover Crops

MINIMIZE DISTURBANCE

- No-till
- Reduced Tillage
- Controlled Traffic
- Avoid Tillage When Wet
- IPM

MAXIMIZE BIODIVERSITY

- Crop rotation
- Rotational grazing
- IPM
- Pollinator Plantings
- Organic Fertilizers
- Legumes in Mix
- Agroforestry
- Cover Crops
- Crop/Livestock Integration

MAXIMIZE SOIL COVER

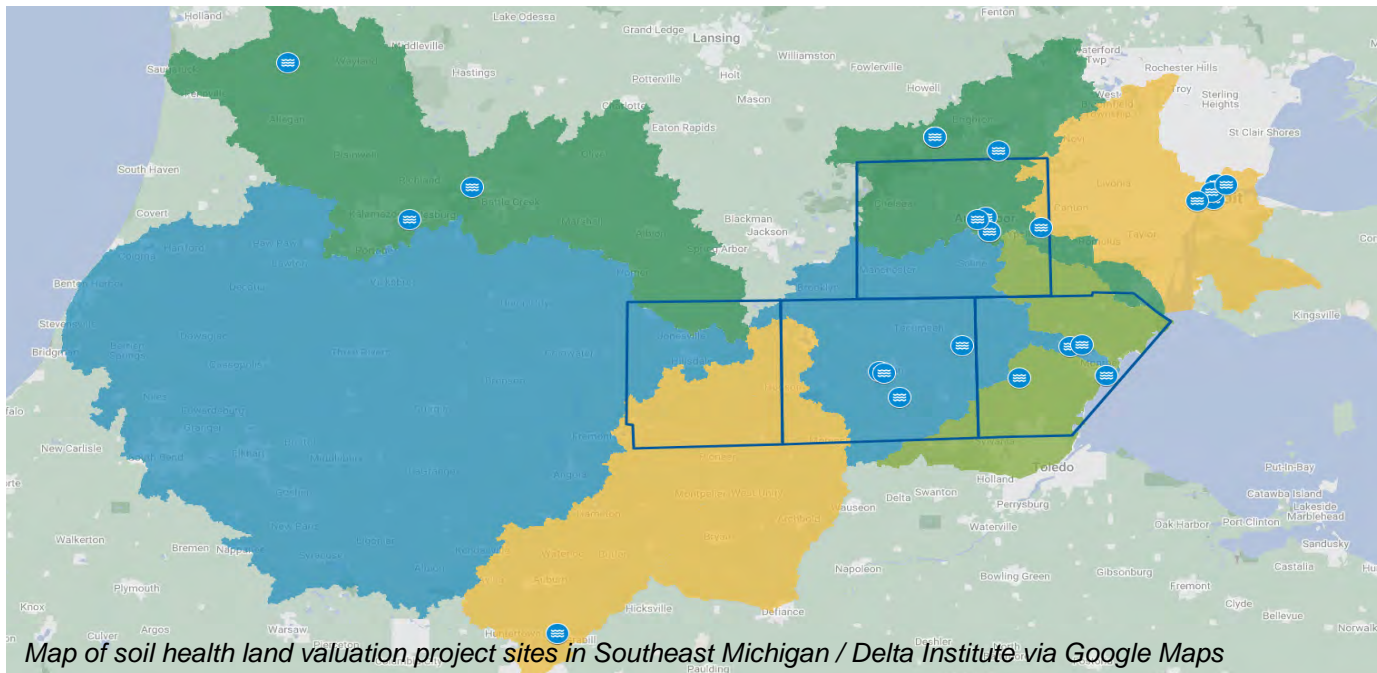
- Mulching
- Reduced Tillage
- Forage and Biomass Planting
- Residue Retention
- Cover Crops
- Green Manures



Our First Stage of Work: Current Conditions and Roadmap Recommendations in Southeast Michigan

To better understand the socioeconomic, environmental, and political dynamics that impact the success of these agricultural conservation programs, the project team at Delta Institute has compiled and summarized data on producer demographics, land use, cropping area, tenure status, conservation practices, and conservation program participation and outcomes.

We've also completed an assessment of potential mechanisms to increase adoption of conservation practices in Southeast Michigan that increase the sustainability of agricultural operations and improve water quality.



Stage Two: Why Our Work is Needed

Farmers face steep hurdles to successfully transition to conservation-focused, climate-resilient agriculture. Value propositions, ranging from improved drought/flooding resilience, greenhouse gas instruments, land appraisal and rent value increases, and other benefits from improving soil health through the adoption of conservation practices, remain unclear to many farmers.

VIEW THE REPORT

[Visit our website](#) to read more about these efforts to improve water and soil quality using economic incentives



INCORPORATING SOIL CONSERVATION PRACTICES INTO FARMLAND APPRAISAL IN SOUTHEASTERN MICHIGAN

MEMORANDUM PREPARED FOR FARMLAND
BROKERS, APPRAISERS & CONSERVATIONISTS
October 2022

delta-institute.org

SUSTAINABILITY & SUPPORT SERVICES

Project Highlight

DEVELOPING A CLEAN ENERGY, RESILIENCY, & SUSTAINABILITY PLAN FOR THE FOREST PRESERVE DISTRICT OF DUPAGE COUNTY

In Summer 2022, the Forest Preserve District of DuPage County began partnering with Delta Institute and Environmental Consulting & Technology, Inc. to create a comprehensive, equitable, partnership-driven, actionable, fundable, and measurable plan to advance the District's position as a regional leader in environmental sustainability.

The Plan has three overarching areas:

- **Clean Energy:** We focused on assessing the feasibility of a number of energy efficiency, renewable energy, and alternative fuel vehicle strategies to help the District reduce its carbon footprint and greenhouse gas emissions.
- **Resiliency:** Using Green Infrastructure, our team began exploring plans to help improve and preserve the District's stormwater management and water quality.
- **Sustainability:** The project team began reviewing opportunities to help the District advance its other environmental sustainability goals, including identifying new opportunities for addressing waste, recycling, and transportation.



Forest Preserve District of DuPage County / Facebook

In May 2023, our project team presented a Gaps, Barrier, and Opportunities report summarizing our findings. One noteworthy finding was that the District's activities have created significant reductions in greenhouse gas emissions, sequestering emissions through conservation land management. Ecosystem services eliminate the operations emissions of the District and reduce greenhouse gas emissions by an additional 900 metric tonnes – this is enough to offset approximately 50 DuPage County households' annual carbon footprints. We plan to release another guide soon that explores green infrastructure monitoring, evaluation, and maintenance.



The report also provided detailed assessments for improving energy efficiency at several District buildings, opportunities for solar energy, and electric vehicle strategies. The opportunities presented demonstrate that the District is well-positioned to increase its usage of clean energy, which will produce long-term cost savings for District operations as well as the environmental benefits it provides. Our assessment showed that the FPDDC is already ahead of its peers in minimizing its GHG emissions from the built environment by using efficient equipment and installing renewable energy from solar photovoltaic and solar thermal operations.

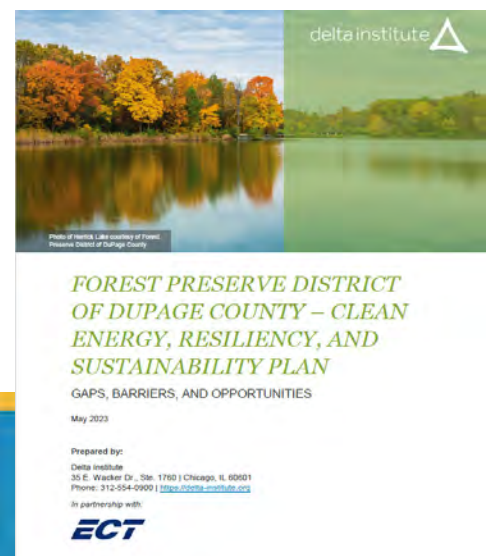
Our partnership found opportunities for the District to reduce an additional 50,607 metric tons of carbon dioxide-equivalent greenhouse gas emissions from the atmosphere annually. According to the U.S. Environmental Protection Agency's Greenhouse Gas Equivalencies Calculator, this amount is comparable to removing 10,904 gasoline-powered vehicles from the road for one year – or the same amount of emissions that would be produced by burning 56 million pounds of coal.

Overall, the project team's findings demonstrate several new opportunities for the District to reduce its carbon footprint even further, increase its resiliency against climate change, and ultimately, continue to invest in long-term restoration, preservation, and stewardship of DuPage County's Forest Preserves.

VIEW THE PUBLICATION

We have highlighted opportunities to continue to improve and have considered electrification costs and benefits as part of this report. [Visit our website](#) to read the full report.

delta-institute.org



ENVIRONMENTAL FINANCE CENTER

Project Highlight

ASSISTING COMMUNITIES WITH WATER INFRASTRUCTURE PROJECTS IN US EPA REGION 5

All communities need access to safe, clean, and reliable water. The Bipartisan Infrastructure Law creates a historic opportunity to improve water infrastructure in communities. EPA's Water Technical Assistance provides hands-on support for communities to assess their needs, identify potential solutions, and develop funding applications. EPA is working with nonprofit technical assistance providers, like Delta Institute, located across the country that have extensive expertise in helping communities solve water challenges.

Delta and our partners, as one of the EPA Region 5 Environmental Finance Centers (EFCs), are providing targeted technical assistance centered around funding for projects that achieve the goals of either the Clean Water Act (i.e. natural sources/bodies of water that benefit the public) or the Safe Drinking Water Act (i.e. water specifically for human consumption, and administered by utilities/municipalities). These projects focus on water infrastructure for local governments, states, Tribal governments, and non-governmental organizations. Our goal is assisting communities to apply to their State Revolving Funds, while ensuring comprehensive collaboration with communities disproportionately impacted by climate change and/or lack of historical access to funding—inclusive of Tribal, BIPOC-majority, and environmental justice communities.

Over the next five years of EFC operations, we plan that more than 200 communities will benefit from our eligible clean water and drinking water finance technical assistance services. We will provide technical assistance to 30 communities in 2024, and plan to scale in 2025-2028 to serve at least 50 communities per year.



Our approach to technical assistance includes:

Targeted and focused services centered on the needs of partner communities.

A community may contact the EPA, or Delta Institute to fill out a technical assistance intake form, [which you can view here](#). This begins the technical assistance process, which normally starts with an informational meeting to learn more about your community. Once we have an understanding a community's needs, we can identify specific services that are both helpful and timely for your community's project planning.

Meeting technical assistance recipients where they are in their project work.



EPA Region 5

Our EFC's approach to technical assistance will commence with and will be grounded within the water utility, municipality, and community needs, to then progress and work from that starting point.

Our services are informed by the technical, administrative, managerial, and financial realities of the communities we work within. This approach directly dovetails with Delta Institute's current and prior municipal- and community-based water infrastructure projects.

Culturally competent services that engage the broader community.

Our EFC's technical assistance will be provided in a culturally competent manner that supports partner communities to build trust. Earnest and consistent efforts will be made to support technical assistance recipients to engage the broader community, including harder-to-reach communities.

This approach directly reflects and coincides with Delta Institute's organizational focus on Diversity, Equity, and Inclusion; such community engagement efforts are a cornerstone of our water- and community-focused projects.



FY22-23 AUDITED FINANCIALS

Consolidated Statement of Financial Position as of June 30, 2023 and 2022

All amounts in USD (\$)

	2023	2022
Total Current Assets	1,996,075	2,035,539
Property and Equipment	18,364	23,017
Right-of-use Asset	639,063	679,558
Beneficial Interest in Trust	5,455,212	5,108,626
Total Assets	8,108,714	7,846,740
Total Liabilities	1,952,517	1,894,046
Total Net Assets	6,156,197	5,952,694
Total Liabilities and Net Assets	8,108,714	7,846,740

Consolidated Statement of Activities and Changes in Net Assets as of June 30, 2023 and 2022

Revenue:

Contributions	889,758	1,067,916
Government Grants	429,527	364,861
Contract Fees	403,083	477,586
Interest and other Income	19,318	(273)
Investment Income from Beneficial Trust	238,584	227,341
Change in Fair Market Value of Beneficial Trust	346,586	(1,153,475)
Gain on debt extinguishment	-	635,214
Total Revenue and Net Assets Released	2,326,856	1,619,170

Expenses:

Program Services	1,250,054	1,245,475
General and Administrative	683,605	601,837
Fundraising	189,694	208,885
Total Expenses	2,123,353	2,056,197

Net Assets - Beginning of Year	5,952,694	6,389,721
Net Assets - End of Year	6,156,197	5,952,694

Download the full annual audit at delta-institute.org/who-we-are/#transparency.

WAYS TO SUPPORT

Delta exists because environmental and economic issues hit communities—both urban and rural—through disinvestment, inequity, and policy decisions. We collaborate to solve systemic environmental and economic issues at the community level by focusing on the self-defined goals and needs that our partners share with us. We believe that acting now is not only a pressing climate change issue, but also an issue of environmental justice and equity.

Ultimately, Delta is helping to create a Midwestern region where all communities and landscapes thrive. Please join us by supporting our work for the year ahead and beyond.

Become a Sustainer

Several of our supporters make smaller monthly donations that add up over time for a larger, more impactful gift. Visit <https://delta-institute.org/donate> and select whether you would like your gift to recur weekly, monthly, quarterly, annually, or simply make a one-time gift. You can cancel or adjust your recurring gift at any time by emailing development@delta-institute.org.



Donate gifts of stock and appreciated securities

In addition to claiming a charitable tax deduction for your contribution, by donating gifts of stock directly to Delta, you may be able to avoid paying capital gains taxes.



Retirement account Qualified Charitable Distributions

Also known as the “IRA Charitable Gift Rollover,” this allows supporters at least 70½ years of age to donate directly through their IRAs without needing to claim the distribution as taxable income. Learn more about donating QCDs at <https://delta-institute.org/ira-qcd>.



Leave a lasting legacy for the Earth

By naming Delta Institute as a beneficiary in your will, life insurance policy, or retirement account, you can make a long lasting impact to continue protecting the Earth for generations to come. Learn more making a planned gift at <https://delta-institute.org/planned-giving>.



Most importantly, please know that regardless if you wish to discuss planning options for a complex gift or if you simply want to chat more about the impact of your donation—no matter the size—we would love the opportunity to connect with you. Feel free to email Delta’s Director of Donor Stewardship, Patrick T. Murphy, at pmurphy@delta-institute.org to set up time for a meeting or phone call. If you are considering making a planned gift or any of the complex gifts listed above, we also recommend you consult your attorney and/or financial planner throughout the process.

Thank you for investing in the Midwest!

Jack Vanden Heuvel / Canva



FY22-23 DONOR ROSTER

For donors contributing between July 1, 2021 – June 30, 2023. Please accept our apologies for any donor roster errors, omissions, or preferred naming. If you have any questions, edits, or revisions, please contact us at development@delta-institute.org. Thank you for your kind support of Delta Institute!

INSTITUTIONAL

Abbott Laboratories	Fogelson Foundation
Achievers	Fred A. and Barbara M. Erb Family
AmazonSmile	Foundation Full Circle Foundation
Ameresco Donations	Gaylord and Dorothy Donnelley Foundation
American Family Insurance Institute for	GE Foundation
Corporate and Social Impact	Great Lakes Protection Fund
Anonymous (12)	HCA Foundation
Arkes Family Foundation	Helen V. Brach Foundation
Bank of America Charitable Foundation	Hunter Family Foundation
BlueSnap	Illinois Department of Natural Resources
Bright Funds Network	Johnson & Johnson
Carbon Yield, LLC	JPMorgan Chase Foundation
Chicago Community Trust	Knight Foundation
Clayco	Lumpkin Family Foundation
ClimeCo, LLC	Marsh & McLennan Companies
CME Group	McDermott Family Charitable Fund McDougal
Comcast	Foundation
CVS Health	MSI Express
Dr. Scholl Foundation	National Fish and Wildlife Foundation
EarthShare	Network for Good
Ed Kaplan Family Institute for Innovation	Oberweiler Foundation
and Tech Entrepreneurship	Patterson Family Foundation
Elevate	Peoples Gas Community Fund
Elizabeth Morse Genius Charitable Trust	PepsiCo
Environmental Consulting & Technology, Inc.	Prairie Rivers Network

(continued)

MSI Express
National Fish and Wildlife Foundation
Network for Good
Oberweiler Foundation
Patterson Family Foundation
Peoples Gas Community Fund
PepsiCo
Prairie Rivers Network
Roanhorse Consulting
RW Ventures
Savanna Institute
Solberg Manufacturing
Tomford Family Foundation
US Bank Foundation
USDA Forest Service
US EPA
Walder Foundation
Walter S Mander Foundation
Walton Family Foundation
Weaver Consultants Group
Willow Springs Charitable Trust
William Blair & Company
Wolfe Computer Associates

INDIVIDUALS

Nathan Aaberg
Brett Adlard
Carole Adlard
Ed Adlard
Eric Adlard
Joseph Adlard
Renee Adler
Amal Agharkar
Jaré Akchin
Liz Alexander
Nicole Allen



Pablo Alvarez
Karl Analo, J.D.
Ellen Anderson
Shannon Anderson
Kate Ansorge and Jon Kuta
Jass Antony
Helen and Michael Arkes
Kelly Aves
Ellie Bahrmassel
Zaiba Baig
Nitesh Bajaj
Arianne Bakelmun
Ashley Bakelmun
Carmelo Barbaro
William Barnard
Asha Barnes
Don and Gayle Bartell
Derek Barthel
Neeraj Baxi
Tom Beck
Chloe Bell
Michael Berger
David Berkley
Andrew Bernhardt
Rachael Berthiaume
Bryan Biello

Mélina Blanc
Brian Bonanno
Alice Boomhower
Paul R. Botts and
Heather McCowen
Taylor Bradshaw
Ciara Braga-Henebry
Joseph Braun
Sage Brinton
Carol Brobeck, AICP
John Broderick
Stephen Brown
Tim Brown
Carla Bruni
Julia Buford
Nathaniel Burgos
Andrew Burroughs
Sarah Bury
Mark Cardwell
Margaret Cavanaugh
Jon Cheffings
Savitha Chelladurai
Tsz Chung To
Beth Churchill
Natalie Citro
Dustin Clark

John Clarke
Megan & Jimmy Conway
Justin Cooper
Eira L. Corral Sepúlveda
Don Corwin
Cathleen Costello
Tim Cycyota
Maria Czerwonka
Dikshya Dahal
Rush Darwish
Michele Davies
Rob Davies
Tammi Davis
Diana De La Torre
Jessie Deelo
Angie Demo
Dawn Demo
Maddie Demo
Luke Dias
Kevin Dick
Robert Dick
Jamie DiRienzo
Julie Dorfman and Jerry Heist
Vivek Doshi
Adele Durfey
Matthew Elmore

Mary Eysenbach
Nick Faghihi
Kelly Farley
Sarah Farrell
Rolando Favela
Hunter Federle-McCabe
Doug Fogelson
David Fording
Jeff Fort
Natalie Foster
David Freed
Peter and Donna Freeman
Sidney Freitag-Fey
Lindley French
Erin Fry
Stef Funk
Ana Garcia-Doyle
Nanci Garoon
Beau Garrett
Taylor Gendel
Diane Gerrish
Julie Ghatan
Juliet Gilbert
Mark Gillingham
Andrea Glick
Susan Goeters Bradshaw

Irina Gokhman
Borja González
Jonathan Goodell
William Gosner
Sam Grothem
Rose Guardino
Anuja Gupta
Stephanie Hacker
Carrie Hall
Emma Hall
Niharika Hanglem
Helen Hardy
Stephen Harman
Michael Harrington
John Harris
Madeline Hart
Sana Haseeb
Salma Hatia
Travis Hawks
Kyndell Highland
Janice Hill
Ashley Hodges
Allison Hannon Holly and
John Holly
Alex Holtmeier
Nolan Hopkinson
Darby Hopper
Colleen Horan
Claire Howard
Tina Hrabak
Eric Hritsuk
Ian Hughes
Raju Huidrom
Alec Iacovelli
Suzanne Ince
Carolina Irani
Maha Issa
Liston Jackson



Delta programs staff Lucas Chamberlain and Melina Blanc touring Northwest Indiana Tree Planting Consortium project site Oak Prairie County Park with Jacob Lovett, Craig Zandstra, and Aren Flint / Delta Institute

Michael Jehl
Patrick Judd
Beth A. Kalin
Kevin Kalus
John Kaminski
Michelle Kaminski
Matt Kane
Steve Kang
Christine Keenan
Maya Kelly
Mike Kelly
Erin Kenney
Spencer Kenney
William Kenney
Amberina Khan
Fatima Khan
Maryam Khan
Sarah Khan
Nishaat Killeen
Jana Kinsman
Wesley Klein
Sarah Knobloch
Zoya Kolkin

Casey Koppelson
Terry Kowalski
David Krajnak
Karina Kuchumov
Mikhail Kuczmariski
Jordan Kuehn
Diane and Jeffrey Kuta
Yasmin Lalani
Hyunjee Lee
Samantha Letscher
Megan Lewis
Kasia Machaj
Caitlin Madden
Nidal Mahmoud
Patricia Majchrowicz
Elizabeth Marshall
Paulina Martínez
Kevin Matos
Adam Matsil
Ann McCabe
Nathan McCardel
Ann McCullough
Katie McFadyen

Alex McGhee
Sarah McGinnis
Sean McIntee
Alex McKay
Ned McLean
James Meador
Jared Melnyk
Michael Meltz
Gael Mennecke
Christina Merullo
Mark Mesle
Mary Kay Minaghan
Jay Moore
Nicholas Morrison
Darin Morse
Zoe Morse
Jeremy Moser
Malcolm Mossman
Mark Murphy
Patrick Murphy
Annett Napoli
Christopher Newman
Olivia Niosi
Angelika Noel
Letitia Noel
Kevin Ogorzalek
Joel Opio
Nigel Ouslan
Nikhita Pai
Sylvia Panek
Sam Panitch
Adam Panza
Jenny B. Par
Todd Parker
Julia Parzen and Daniel Johnson
Akshar Patel
Amea Patel

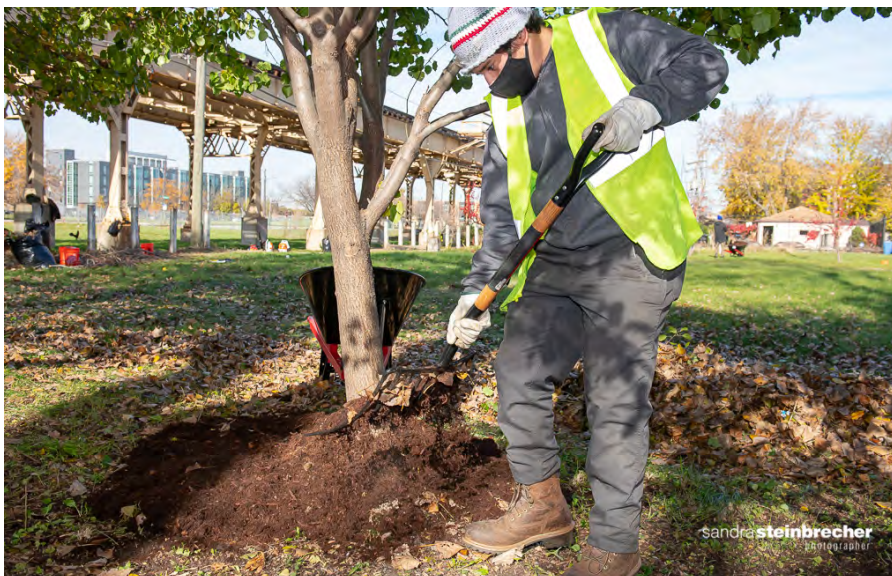


Photo by Sandra Steinbrecher

Mit Patel
Jo Pena
Rae Perez
Kendria Perry-Madden
Loretta Peterson
Eric Phillips
Jean Pogge
Kyle Preuss
Christina Radmacher
Suroor Raheemullah
Lex Reed
Conner Rettig
Chris Rhoads
Charlie Rice-Minoso
Shelby Riggle
Julie Rizzo
Vanessa Roanhorse
Joseph Rosa
David Rosenblatt
David Rosenheim
Sarah B. Rubin
Alicia Russo
Maryan Saleh
John Salvino
Jessy Sanders
Hank Saunders and Richard Day
Tejaswita Sawant
Kathleen Scambiaterra
Naomi Schauer
Sam Schiller and Rebecca Stevens
William Schleizer
Barbara Schmidt-Bailey
Spike Schonthal
Katherine Schultz
Douglas Scott
Peter Scruggs
Casey Sebetto
Jessica Settepani
Lee Shackelford

Sabina Shaikh and Joseph Deal
Jeffrey Shelden
Kinga Siek
Adele Simmons
Sanjiv K. Sinha
Kim Sliteris
Hannah Slodounik
Joan Smedinghoff
Jerome Smith
Tim Smith
Grace Snider
Travis Solberg
Kavita Sood
Adam Sorkin
Elinor Sorkin
David South
Nick Souza
Donald Spetter
Jeffrey Spetter
Julia Steigerwald
Bill Stein
Brad Stein
Ryan Stephens
Nicolette Stosur-Bassett
Lindsey Sullivan
Patrick Sullivan
Robert Szczesniak
Kathy Tarkowski
Katherine Tellock
Teska Associates
Aren Thompson
Christina Timmins
Tomford Family Fund
Peter Toth
Kim Totten
Vah Toure
Lauren Tranchita
Jeremy Treister

Michael Tubman
Sophia Usow
Katie Vail
Jessica van der Vooren
Greg Vasilion
Ashvin Veligandla
Jennifer Walling
Sarah Walwema
Journey Wenker
Cass Westover
Michelle and Kyle Wilkinson
Ethelbert Williams
Jeff D. Williams
Anna Withers
Larry Witzling
Eloy Yndigoyen
Katherine Yocum Musisi
Karen Youngblood
Emily Zeisler
Tess Zelechowski
Edward Zuckerman
Joshua Zuckerman
Margot Zuckerman



Delta Institute's 2023 Annual Retreat

WHO WE ARE

As of June 30, 2023

This section lists Delta's Board of Directors, Delta Emerging Leaders, and Delta Staff as of the end of our fiscal year ending June 30, 2023. For current listings, please visit delta-institute.org/who-we-are/our-team.



DELTA BOARD OF DIRECTORS

Officers

Sanjiv K. Sinha, PE, PhD
Board Chair
CEO, Corvias Infrastructure Solutions

Vanessa Roanhorse
Vice Chair
Governance & Nominating Committee Chair
CEO, Roanhorse Consulting LLC

Allison Hannon Holly, MBA
Treasurer
Finance Committee Chair
Director of Strategy US East, Pattern
Energy Group

Lindsey Sullivan, J.D.
Secretary
57 Stars, LLC

Members

Jaré Akchin
Vice President for Jewish Community
Impact, Third Plateau

Karl Analo, J.D.
Counsel, Labor & Employment; Abbott
Laboratories

Ashley Bakelmun
Managing Director, RW Ventures, LLC

Jon Cheffings
Development Committee Co-Chair
EVP, Strategy, SCC&M

Eira L. Corral Sepúlveda
Commissioner, Metropolitan Water
Reclamation District of Greater Chicago

Jessie Deelo
Founder, Deelo Consulting Services

David Fording, CFA
Partner and Portfolio Manager, William Blair

Niharika Hanglem
Development Committee Co-Chair
Program Director, Ed Kaplan Family Institute
for Innovation and Tech Entrepreneurship at
Illinois Institute of Technology

Mike Harrington, LEED GA
Assistant Director, Tishman Environment and
Design Center, New School

Kevin Kalus
Market Executive, Illinois Middle Market, JP
Morgan Chase

Ann McCabe
Commissioner, Illinois Commerce Commission

David South
Clean Energy/Sustainability Advisor, South
Ventures, LLC

The Delta Emerging Leaders volunteering with BOOST 2022 winner, EcoShip, at Reuse-a-Palooza



DELTA EMERGING LEADERS

Executive Team

Liz Alexander
Co-Chair

Carol Brobeck
Co-Chair

Chloe Bell
Communications Committee Chair
Development Committee Liaison

Julia Buford
Treasurer
Finance Committee Liaison

Hunter Federle-McCabe
Outreach Committee Chair
Governance and Nominating Committee Liaison

Kasia Machaj
Secretary

Conner Rettig
Programming Committee Chair
Development Committee Liaison

Members

Nitesh Bajaj

Maria Czerwonka

Diana De La Torre

Madeline Demo

Cécile Dick-Calmès

Claire Howard

Erin Kenney

Hyunjee Lee

Ned McLean

Zoe Morse

Peter Scruggs

Jerome Smith

Grace Snider

Sara Walwema

DELTA STAFF

Mélina Blanc
Lead, Nature-Based Climate Solutions

Mackenzie Manley Buchek
Senior Associate, Finance and Operations

Lucas Chamberlain
Associate, Programs

Claire Costelloe
Associate, Programs

Sidney (Sid) Freitag-Fey, CFRE
Senior Director, Development and Communications

Helen M. Hardy
Chief Financial Officer

Maha Issa, PhD
Specialist, Programs for Nature-Based Climate Solutions

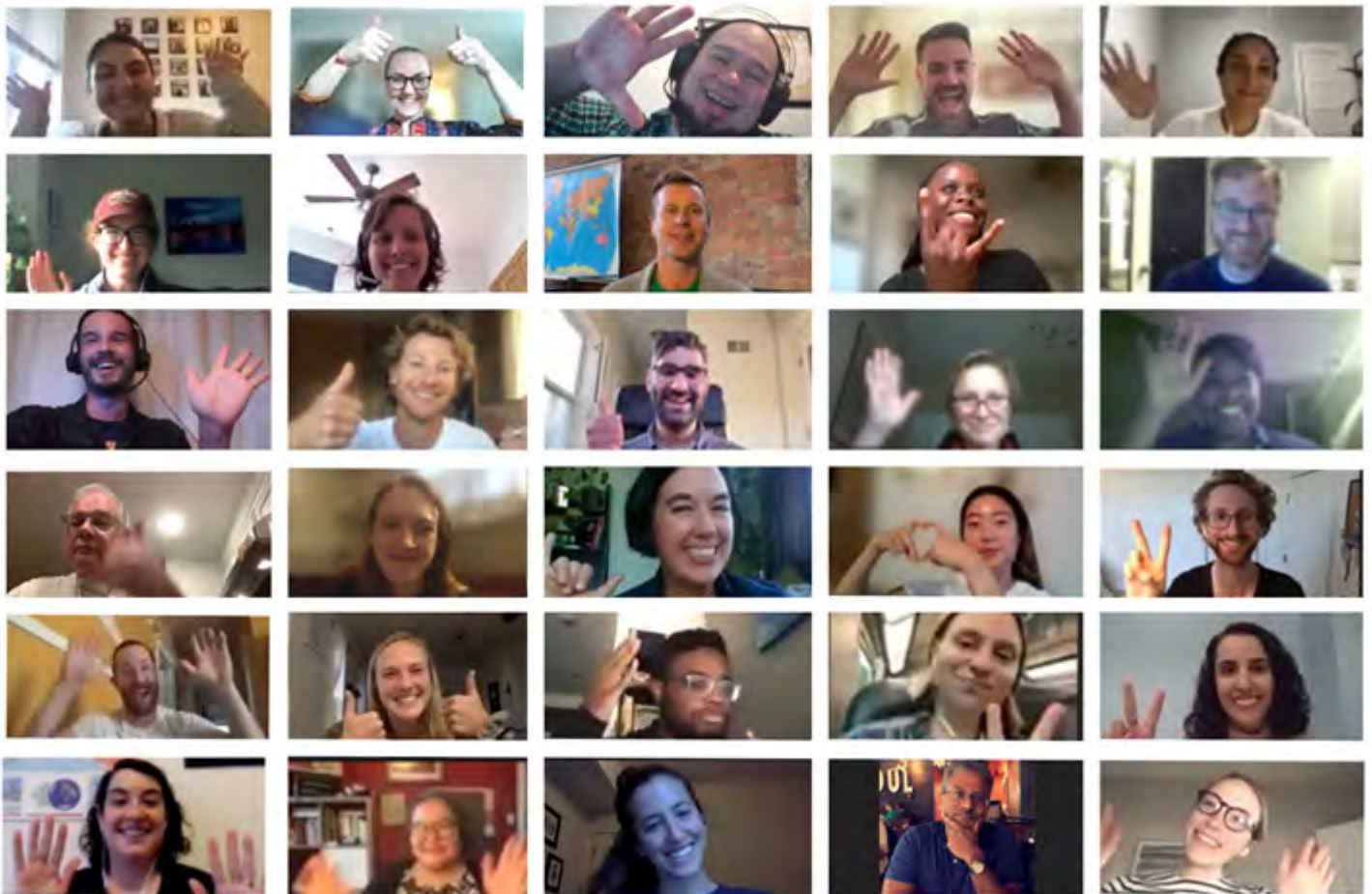
Malcolm Mossman, AICP
Senior Specialist, Programs

Patrick T. Murphy
Senior Lead, Development and Communications

Jenny B. Par
Associate, Programs

William (Bill) Schleizer
CEO

Katherine Schultz
Senior Lead, Finance and Operations





35 E. Wacker Dr., Ste. 1760

Chicago, IL 60601

delta-institute.org | 312-554-0900

